

CR7 Vet Dental X-Ray

DENTAL HEALTH MATTERS



iM3[®]
The Veterinary Dental Company

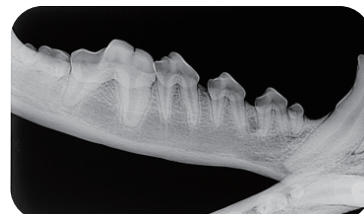
Dramatically improves patient care and decision making

Does not need a specialist level of training to deploy

Intuitive software for quick and easy operation

The CR7 Vet features the largest range of plate sizes

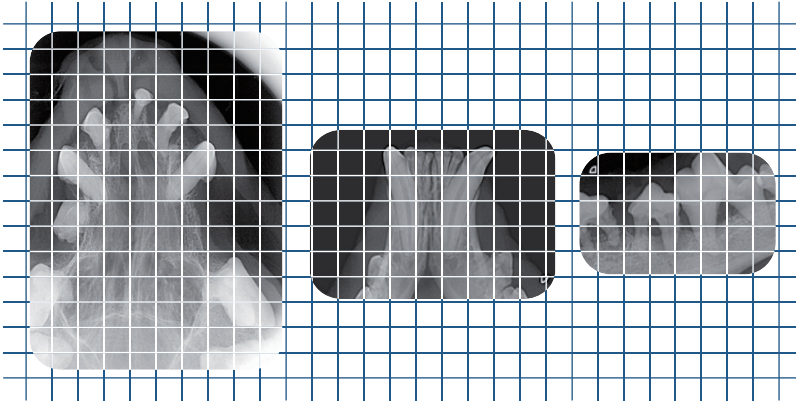
Compared to other veterinary dental scanners, the CR7 Vet provides unsurpassed high-resolution images, fast processing time, user friendly software and the largest range of reusable flexible plate sizes for dental and small animal extremity applications.



The only scanner currently available worldwide with intraoral plates for rabbits



Dental Radiographs reveal underlying pathology



Intraoral radiographs have revealed underlying pathology in:

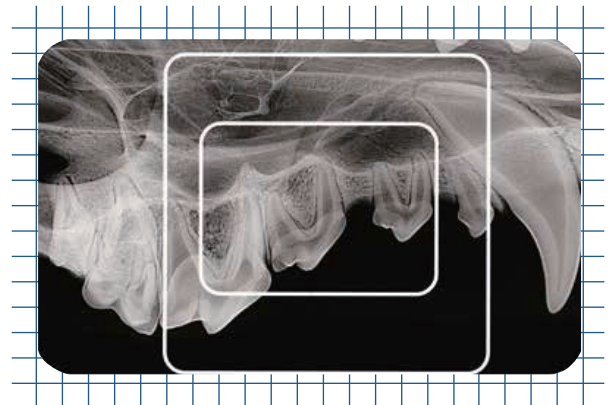
- 27.8% of dogs where no abnormal findings were found on oral examination
- 41.7% of cats where no abnormal findings were found on oral examination

Current AAHA Guidelines (American Animal Hospital Association) for dental care in cats and dogs advocates routine whole mouth radiographs for all patients receiving professional cleaning (ie: Grade 1) and periodontal therapy (ie: Grade 2-4).

The benchmark in digital X-Ray imaging for veterinary dentistry



- // Excellent quality, superior resolution images
- // Unique design protects unit and radiographs from dust, hair and particles that can reduce image quality
- // Easily removed plate feeder for cleaning
- // Plate feeder accepts all image plate sizes without the need to change loading cradles - unlike other systems
- // Largest range of plate sizes



IM3[®] REVOLUTION 4DC



Revolution 4DC Multi-Mode

Totally automatic choice of the most appropriate combination of technical factors. KV, mA and exposure time are determined according to patient size and anatomical region of interest.



Multiple Exposure

Revolution 4DC allows uninterrupted use during multiple exposures, such as full mouth acquisition, thanks to the Dynamic Duty-Cycle, based on real time control over the bulb temperature, visible on the handheld display.



Precision Imaging

Specifically conceived for digital X-Ray imaging, the constant potential tube head combined with the smallest focal spot available for intraoral imaging (0.4mm) guarantees consistently sharp images.

Portable Dental X-Ray PORT-X II



Portable Control

Light and small with rechargeable battery enables easy shooting and keeping everywhere



Simple Operation

Fixed kV (60) and mA (2)
- adjust the exposure time ONLY during operations



X-ray Generator	Tube Voltage	60kV
	Tube Current	2mA
X-ray Control	Focal Spot	0.8mm
	Exposure Time Set	56 Steps (0.01 – 2.0 sec)
Weight	Main Body	2.35kg
Dimensions	Main Body	197 x 147 x 145 (mm)

For more information, Please contact Asia Vet Medical Limited.



Asia Vet Medical Limited
Tel: (852) 2335 9200
Fax: (852) 2335 0008
Email: sales@avmhc.com